



KUESTA

www.kuesta.com

PRODUCT CATALOGUE

ENGLISH





Product Range



STEEL RULE PRODUCTS

- Cutting rules
 - Edge hardened rules
 - Through hardened rules
- Creasing rule
 - Cut-crease rule
- Special rules
 - Wave and dekle rule
 - Zipper rules
 - Glue flap rules
 - Spacer Rules
- Tolerances

DIE ACCESSORIES

- Die punches
- Die board
- Stripping plates / pins
- Others

Steel Rule Products

Rule Bevel Profile

<p>CB</p> <p>Center Bevel</p>	<p>CF DB</p> <p>Center Face Double Bevel</p>	<p>SB</p> <p>Side Bevel</p>
--------------------------------------	-----------------------------------------------------	------------------------------------

Rule Bevel Finish

<p>Shaved Cutting Bevel (S)</p>	<p>Ground Cutting bevel (G)</p>	<p>Shaved Cutting Bevel (S) The standard finish for Servitroquel cutting rules is a precision Shaved/drawn edge bevel surface. This provides an excellent height consistency.</p> <p>Ground Cutting bevel (G) For professional cutting of plastics, rubber, laminates, and coated materials a sharpened /ground cutting is the best choice.</p>
---------------------------------	---------------------------------	-----------------------------------------------------------------------------------------------------------------------------------------------------------------------------------------------------------------------------------------------------------------------------------------------------------------------------------------------------------------------

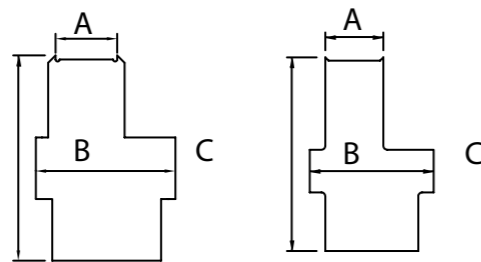
Stripping Plates / Pins

Servi Strip - Stripping Plates



Stripping plates designed and created for scrap ejection in jobs using free fall expulsion. Available in two bevel styles – straight and extension and in two formats, flat or with 90° fold. Various dimensions can be supplied.

Various formats can be made to measure!



Servi Strip

Stock Code	A	B	C	Stock Code	A	B	C
MJ0014	5 mm	A + 19 mm	50 mm	MJ0021	4 mm	A + 19 mm	50 mm
MJ0015	7 mm	A + 19 mm	50 mm	MJ0022	6 mm	A + 19 mm	50 mm
MJ0016	9 mm	A + 19 mm	50 mm	MJ0100	8 mm	A + 19 mm	50 mm
MJ0017	11 mm	A + 19 mm	50 mm	MJ0023	10 mm	A + 19 mm	50 mm
MJ0018	15 mm	A + 19 mm	50 mm	MJ0102	12 mm	A + 19 mm	50 mm
MJ0019	20 mm	A + 19 mm	50 mm				
MJ0020	25 mm	A + 19 mm	50 mm				

Stripping Pins



Flat Head

Length	Diameter
50 mm	2 mm
50 mm	3 mm
50 mm	4 mm
50 mm	6 mm
50 mm	7 mm
50 mm	8 mm
50 mm	9 mm
50 mm	10 mm
50 mm	12 mm

Min. order quantity: 250 units.

Pointed

Length	Diameter
50 mm	2 mm
50 mm	3 mm
50 mm	4 mm
50 mm	6 mm
50 mm	8 mm
50 mm	10 mm

Min. order quantity: 250 units.

Die Board

(Plywood - Birch)

Flat Bed Panels



Sizes (height x width)

Height	Width	Thickness
1.525 mm	1525 mm	9 mm
1.220 mm	2.440 mm	12,0 mm
		15,0 mm
		18,0 mm
Quality	BB / BB	
	BB / CP	
	CP / C	

*Any other size and thickness can be produced for demand.



Narrow Stripping Pins



Lenght	Diameter	Stok Code
50 mm	2 mm	MJ0008
50 mm	3 mm	MJ0009
50 mm	4 mm	MJ0010
50 mm	5 mm	MJ0011
50 mm	6 mm	MJ0012
Material	Carbon Steel	
Surface	Zinc Plated	

Pertinax - Sheets



	Brown Standard	Brown Ultra
Size	1070 mm x 1070 mm	1070 mm x 1070 mm
Hight	0,30 mm - 1,40 mm	0,50 mm - 1,00 mm
Thickness tolerance:	(-0.03/+0.02 mm)	(-0.03/+0.02 mm) Double-reinforced with glass fibre
Minimum order quantity 20 pcs		



Die Punches

Punches for die cutting of cardboard or other non-metal materials. Made of hardened steel or special carburized steel tube, depending on the work for which they are intended.



Spring Punches

Height	Cutting Diameter
23,8 mm	1 mm up to 13,0 mm (in 0,5 mm steps)
23,3 mm	2 mm up to 10,0 mm (in 0,5 mm steps)



Bowl Punches

Height	Cutting Diameter
23,8 mm	2 mm up to 10,0 mm (in 0,5 mm steps)



Center Bevel Punches

Height	Cutting Diameter
23,8 mm	2 mm up to 13,0 mm (in 0,5 mm steps)



Side Ejection Punches

Height	Cutting Diameter
23,8 mm	1 mm up to 10,0 mm (in 0,5 mm steps)

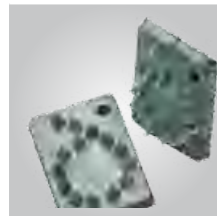
Details

Spring Punches		Spring Punches		Bowl Punches	
Height: 23,80 mm		Height: 23,30 mm		Height: 23,80 mm	
Stock Code	Cutting Diameter	Stock Code	Cutting Diameter	Stock Code	Cutting Diameter
MZ0001	1,00 mm	MZ0094	2,00 mm	MZ0054	2,00 mm
MZ0002	1,50 mm	MZ0095	2,50 mm	MZ0055	2,50 mm
MZ0003	2,00 mm	MZ0096	3,00 mm	MZ0056	3,00 mm
MZ0004	2,50 mm	MZ0110	3,50 mm	MZ0057	3,50 mm
MZ0005	3,00 mm	MZ0097	4,00 mm	MZ0058	4,00 mm
MZ0006	3,50 mm	MZ0104	4,50 mm	MZ0059	4,50 mm
MZ0007	4,00 mm	MZ0098	5,00 mm	MZ0060	5,00 mm
MZ0008	4,50 mm	MZ0111	5,50 mm	MZ0061	5,50 mm
MZ0009	5,00 mm	MZ0099	6,00 mm	MZ0062	6,00 mm
MZ0010	5,50 mm	MZ0132	6,50 mm	MZ0063	6,50 mm
MZ0011	6,00 mm	MZ0100	7,00 mm	MZ0064	7,00 mm
MZ0012	6,50 mm	MZ0133	7,50 mm	MZ0065	7,50 mm
MZ0013	7,00 mm	MZ0101	8,00 mm	MZ0066	8,00 mm
MZ0014	7,50 mm	MZ0112	8,50 mm	MZ0067	8,50 mm
MZ0015	8,00 mm	MZ0113	9,00 mm	MZ0068	9,00 mm
MZ0016	8,50 mm	MZ0123	9,50 mm	MZ0069	9,50 mm
MZ0017	9,00 mm	MZ0102	10,00 mm	MZ0070	10,00 mm
MZ0018	9,50 mm				
MZ0019	10,00 mm				
MZ0020	11,00 mm				
MZ0021	12,00 mm				
MZ0022	13,00 mm				
MZ0023	14,00 mm				

Back Ejection Punches (Center Bevel)		Side Ejection Punches	
Height: 23,80 mm		Height: 23,80 mm	
Stock Code	Cutting Diameter	Stock Code	Cutting Diameter
MZ0024	2,00 mm	MG0001	1,00 mm
MZ0025	2,50 mm	MG0002	1,50 mm
MZ0026	3,00 mm	MG0003	2,00 mm
MZ0027	4,00 mm	MG0004	2,50 mm
MZ0126	4,50 mm	MG0005	3,00 mm
MZ0028	5,00 mm	MG0006	3,50 mm
MZ0029	6,00 mm	MG0007	4,00 mm
MZ0030	7,00 mm	MG0008	4,50 mm
MZ0031	8,00 mm	MG0009	5,00 mm
MZ0032	8,50 mm	MZ0103	6,50 mm
MZ0033	9,00 mm	MG0010	6,00 mm
MZ0124	9,50 mm	MG0011	7,00 mm
MZ0034	10,00 mm	MZ0077	8,00 mm
MZ0035	11,00 mm	MZ0078	9,00 mm
MZ0036	12,00 mm	MZ0079	10,00 mm
MZ0037	13,00 mm		

Perfatypes

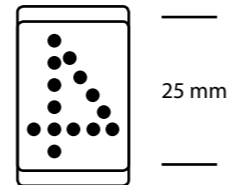
Perfatypes



Numbers / Letters

Pervo Types Letters, numbers and symbols, 25mm height to be used only with holder

Holder Height 37 mm, min. quantity 25 units



Symbols



The Green Point

50 mm x 50 mm, min. quantity 25 units



Resy Symbol - Standard

60 mm x 70 mm, min. quantity 25 units

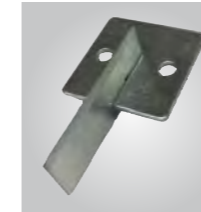


International Recycling Symbol

75 mm x 75 mm, min. quantity 25 units

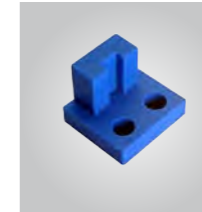


Die Accessories



Separating Knives

Metal
Min. order quantity 250 units
Stok Code: MJ0013



Centering Plots - CTL0007

Colours: blue
Min. order quantity 250 units
Stok Code: MJ0004



Distance Screw and Nut

Plastic
Complete Set or only Screw or Nut
Min. order quantity 250 units
Stok Code: MJ0002 & MJ0003



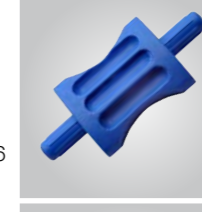
Centerline Strengthener - CTL0006

Size: 12 mm / 15 mm / 18 mm
Min. order quantity 250 units
Stok Code: MJ0093



Edge Protector

Plastic
Size: 12 mm / 15 mm / 18 mm
Min. order quantity 250 units
Stok Code: MC0084 / MC0085 / MC0086



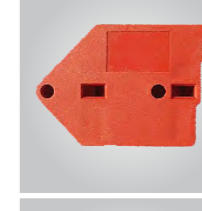
Oval Spacers - CTL0011

Colours: blue
Min. order quantity 250 units
Stok Code: MJ0006



Distance Spacer

Plastic 23 mm black
Plastic 23 mm green
Plastic blue
Min. order quantity 250 units



Clamp Block - CTL0008

Colours: red
Min. order quantity 250 units
Stok Code: MJ0007



Centerline - Female - CTL0010

Upper Stripping Board
Min. order quantity 250 units
Stok Code: MJ0075



T-Nuts

Four prongs metric with 4mm / 5mm / 6mm / 7 mm / 8 mm
Min. order quantity 250 units



Centerline - Male - CTL0010

Upper Stripping Board
Min. order quantity 250 units
Stok Code: MJ0093



Locator Pin

plastic
Min. order quantity 100 units
Stok Code: MJ0028



Stripping Plates

metal
Min. order quantity 200 units
Stok Code: MJ0023



Aluminium Locator Pin

metal
Min. order quantity 100 units
Stok Code: MJ0027

Die Punches

Punches for die cutting of cardboard or other non-metal materials. Made of hardened steel or special carburized steel tube, depending on the work for which they are intended.



Model PT

Height	Ø EXT.
19, 20mm	1,75mm
18, 19, 20mm	2 mm
18, 19, 20, 30, 32mm	2,5 mm
18, 19, 20, 30, 32mm	3 mm
50mm	4 mm



Model PTS

Height	Ø EXT.
18, 19, 20mm	2 mm
18, 19, 20mm	2,5 mm
18, 19, 20, 30, 32mm	3 mm



Model PTF

Height	Ø EXT.
18, 19, 20mm	2 mm
18, 19, 20mm	2,5 mm
18, 19, 20, 30, 32mm	3 mm



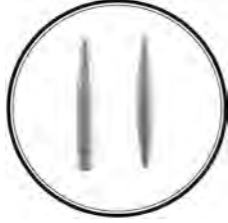
Model PTR

Height	Ø EXT.
18, 19, 20mm	2 mm
18, 19, 20mm	2,5 mm
18, 19, 20, 30, 32mm	3 mm



Model PGC

Height	Ø EXT.
32 mm	3 mm
50 mm	4 mm

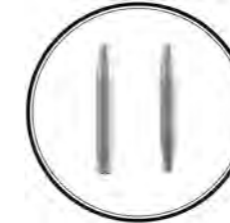


Model PPP

Height	Ø EXT.	Ø POINT
19, 20mm	2 mm	0,6 mm
19, 20mm	2 mm	0,8 mm
19, 20, 30, 32mm	2,5 mm	1,25 mm
19, 20, 30, 32mm	2,5 mm	1 mm
19, 20, 30, 32mm	3 mm	1,5 mm
19, 20, 30, 32mm	3 mm	2 mm

Die Punches

Punches for die cutting of cardboard or other non-metal materials. Made of hardened steel or special carburized steel tube, depending on the work for which they are intended.



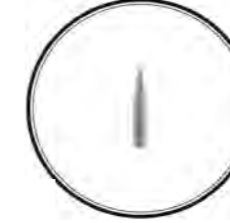
Model PC

Height	Ø EXT.	Ø POINT
19, 20mm	2 mm	0,6 mm
19, 20mm	2 mm	0,8 mm
19, 20, 30, 32mm	2,5 mm	1 mm
19, 20, 30, 32mm	2,5 mm	2 mm
19, 20, 30, 32mm	3 mm	3 mm
19, 20, 30, 32mm	3 mm	4 mm



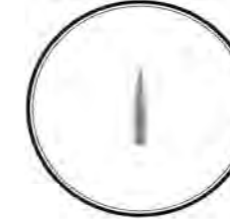
Model PR

Height	Ø EXT.
9,7 mm	1,5 - 1,75 - 2 - 2,25 - 2,5 mm
12,7 mm	1,5 - 1,75 - 2 - 2,25 - 2,5 mm



Model PRP

Height	Ø EXT.
9,7 mm	1,5 - 1,75 - 2 - 2,25 - 2,5* - 2,75 - 3 - 3,2 mm
12,7 mm	1,5 - 1,75 - 2 - 2,25 - 2,5* - 2,75 - 3 - 3,2 mm
	*2,5mm Ø EXT - 1mm and 1,2mm POINT



Model PRC

Height	Ø EXT.
9,7 mm	1,5 - 1,75 - 2 - 2,25 - 2,5* - 2,75 - 3 - 3,2 mm
12,7 mm	1,5 - 1,75 - 2 - 2,25 - 2,5* - 2,75 - 3 - 3,2 mm
	*2,5mm Ø EXT - 1mm and 1,2mm POINT



Model CBR

Height	Ø EXT.
9,7 mm	2 mm up to 10,0 mm (in 0,5 mm steps)
12,7 mm	2 mm up to 10,0 mm (in 0,5 mm steps)
19 mm	2 mm up to 10,0 mm (in 0,5 mm steps)
20 mm	2 mm up to 10,0 mm (in 0,5 mm steps)
30 mm	2 mm up to 10,0 mm (in 0,5 mm steps)
32 mm	2 mm up to 10,0 mm (in 0,5 mm steps)

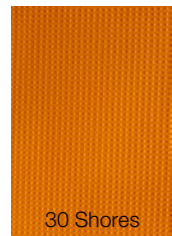


Model CC

Height	Standard Measures
19 mm	3 - 4 - 5 - 6 - 7 - 8 - 10 mm
20 mm	3 - 4 - 5 - 6 - 7 - 8 - 10 mm
30 mm	3 - 4 - 5 - 6 - 7 - 8 - 10 mm
32 mm	3 - 4 - 5 - 6 - 7 - 8 - 10 mm

EVA RUBBERS

EVA RUBBERS

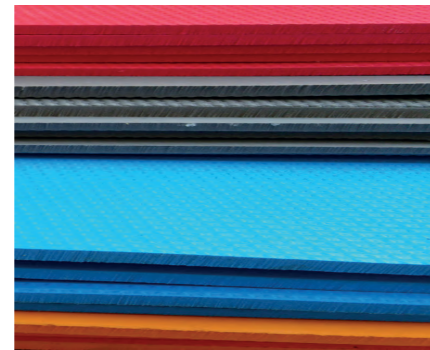


Eva Rubber
 Size: 1200mm x 1650mm
 Thickness: 7,5 mm
 Color: Orange
 Hardness: 30 Shore
 Stock Code: ML0130

EVA rubber is a wear-resistant, foamed synthetic material, a copolymer of ethylene with vinyl acetate. Its relatively low specific gravity and the closed cell structure allow this material to be used in a wide range of applications.



Eva Rubber
 Size: 900mm x 1200mm
 Thickness: 7,5 mm
 Color: Blue
 Hardness: 30 Shore
 Stock Code: ML0132

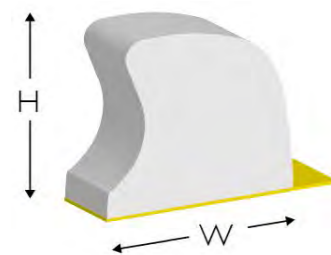


Eva Rubber
 Size: 1000mm x 1400mm
 Thickness: 7,5 mm
 Color: Blue
 Hardness: 20-30 Shore
 Stock Code: ML0082



Eva Rubber
 Size: 900mm x 1200mm
 Thickness: 7,5 mm
 Color: Red
 Hardness: 45 Shore
 Stock Code: ML0131

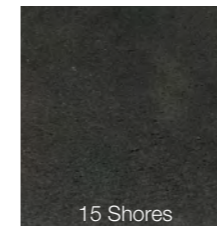
PROFILE RUBBERS



Profile Rubber FAST
 Size: 700 x 8.0 x 7.3 mm / 700 x 5.0 x 7.3 mm / 700 x 8.5 x 9.5 mm
 Hardness: 70 Shore
 Color: White
 Stock Code: MC0039, MC0040, MC1640
 Higher running life (≥ 2 Mio)
 Excellent aging resistance, UV resistance

STANDARD RUBBERS

STANDARD RUBBERS



Standard Rubbers
 Size: 1000mm x 1000 mm
 Thickness: 7, 11 mm
 Color: Black
 Hardness: 15 Shore
 Stock Code: ML0130

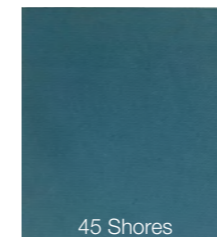
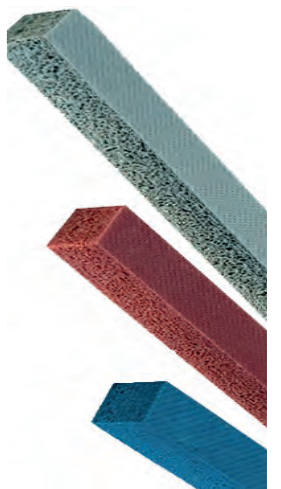
Due to our system of strict quality controls, we guarantee consistency in the quality of our sponge rubber and it therefore gives the best ejection performance for your diecutting process as well as allowing a constant production speed.



Eva Rubber
 Size: 710mm x 1240 mm
 Thickness: 7, 11 mm
 Color: Grey
 Hardness: 25 Shore
 Stock Code: MC0094, MC1675
 * With and w/o self-adhesion

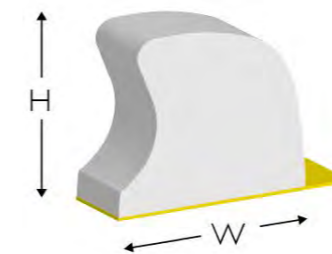


Eva Rubber
 Size: 710mm x 1240 mm
 Thickness: 7, 10 mm
 Color: Red
 Hardness: 35 Shore
 Stock Code: MC0045, MC0046
 * With and w/o self-adhesion



Eva Rubber
 Size: 690mm x 1240 mm
 Thickness: 7 mm
 Color: Blue
 Hardness: 45 Shore
 Stock Code: MC1677, MC1682
 * With and w/o self-adhesion

PROFILE RUBBERS



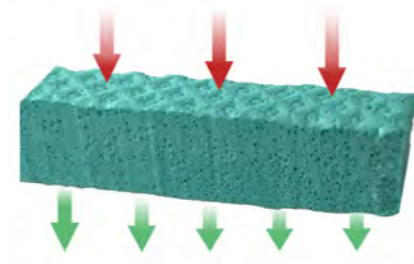
Profile Rubber MASTER
 Size: 700 x 8.0 x 7.3 mm / 700 x 5.0 x 7.3 mm / 700 x 8.5 x 9.5 mm
 Hardness: 70 Shore
 Color: White
 Stock Code: MC0041, MC0042, MC1639
 Higher running life (≥ 3 Mio)
 Excellent aging resistance, UV resistance

EJECTION RUBBER

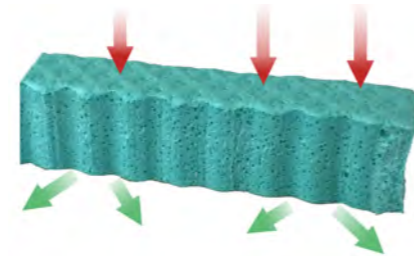
SPONGE RUBBER



Sponge adhesive rubber is environmental friendly. Closed-cell cellular plastic is durable and long life. self-adhesive.



The same direction



Different directions

Adhesive Rubber

Size: 300 mm x 210mm
 Thickness: 8 mm
 Color: Green
 Hardness: 25 Shore
 Stock Code: ML0089

Adhesive Rubber

Size: 300 mm x 210mm
 Thickness: 11 mm
 Color: Green
 Hardness: 25 Shore
 Stock Code: ML0091

EJECTION RUBBER

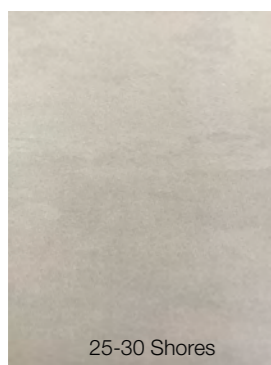


60-65 Shores

EVA Rubber

Size: 1000mm x 1400mm
 Thickness: 8, 10 mm
 Color: Black
 Hardness: 60-65 Shore
 Stock Code: MC0039, MC0040, MC1640

Excellent aging resistance, UV resistance



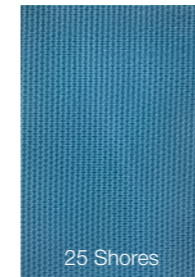
25-30 Shores

EVA Rubber

Size: 1000mm x 1400mm
 Thickness: 7,5mm - 11 mm
 Color: Grey
 Hardness: 25-30 Shore
 Stock Code: ML0082, ML0088

Excellent aging resistance, UV resistance

OPEN CELL



25 Shores

Open Cell

Size: 600mm x 250mm / 500mm x 500mm
 Thickness: 7, 11 mm
 Color: Blue
 Hardness: 25 Shore
 Stock Code: ML0053, ML0079 / ML0056



35 Shores

Open Cell

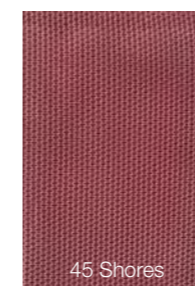
Size: 600mm x 250mm / 700mm x 250mm / 500mm x 500mm
 Thickness: 7, 11 mm
 Color: Grey
 Hardness: 35 Shore
 Stock Code: ML0054, ML0052, ML0057 / ML0080



45 Shores

Open Cell

Size: 600mm x 250mm / 700mm x 250mm / 500mm x 500mm
 Thickness: 7, 11 mm
 Color: White
 Hardness: 45 Shore
 Stock Code: MC0045, MC0046

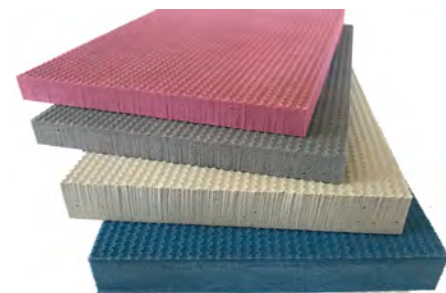


45 Shores

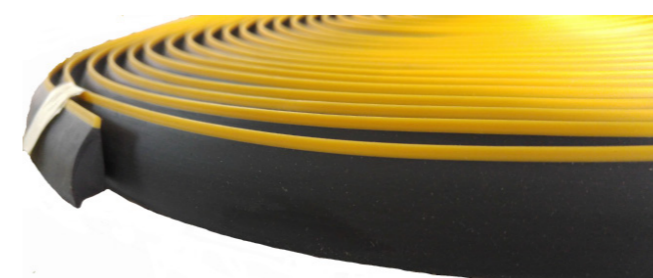
Eva Rubber

Size: 600mm x 250mm / 500mm x 500mm
 Thickness: 7, 11 mm
 Color: Pink
 Hardness: 45 Shore
 Stock Code: ML0055, ML0081 / ML0060

Due to our system of strict quality controls, we guarantee consistency in the quality of our open cell and it therefore gives the best ejection performance for your diecutting process as well as allowing a constant production speed.



CUSHING CREASE



Details

Size: 600mm x 250mm / 500mm x 500mm
 Thickness: 7 / 8 / 9 / 9,7 mm
 Colour: Green / Blue / Yellow / Pink
 Unit (1roll): 25 Mt / 20 Mt / 20 Mt / 15 Mt
 Stock Code: MJ0071 / MJ0072 / MJ0073 / MJ0074
 Hardness: 70 Shore

KUESTA

www.kuesta.com

Everything for producing dies



KUESTA DIS TIC. LTD. STI.
Hurriyet Bulv. Ikitelli O.S.B. Deparko San.
Sit. No:1/6-Z2 / 34490 Basaksehir Istanbul / TURKEY
Tel: +90 212 553 53 13 Fax: +90 212 549 91 95
e-mail : kuesta@kuesta.com / www.kuesta.com